



# BPTrends and Forrester include ADOscore as a subject of current publications.



Enterprise Modelling is often associated with the terms *Business Processes* and *IT Architecture Management*. At the heart of the Enterprise Model is the company's strategy and with Strategic Enterprise Modelling a new and evolving Enterprise Architecture Tool is required to meet this demand.

ADOscore is presented as a tool for high level Enterprise Modelling within BPTrends and Forrester publications.

BOC Press Feature


## Enterprise Modelling BPTrends

This exact idea of the Strategic Management of company objectives and their technical support was the subject of the article »Enterprise Modelling« from BPTrends. ADOscore, the Strategy and Performance Management product developed by the BOC Group, has been presented as a solution for Performance Monitoring along with the evaluation of Management Performance and was highly recommended for the scenario of Scorecard-based Monitoring.

## Strategic Management Forrester


Forrester published a Forrester Wave™ document with the title »Business Modelling for CxOs« and is therefore concerned with the subject of Strategic Management and its important position within company modelling also. The BOC Group is presented as a provider of Enterprise Architecture Management as well as high level modelling solutions in the Forrester study, which ADOscore with its flexible structure supports along with the Balanced Scorecard approach. ADOscore is a product which should not be missing from any shortlist when deciding about a tool for modelling and monitoring a company's strategy and performance.

## Quotes within the publications



**BPTrends, Volume 5, number 18**

*»... a tool like ADOscore provides a nice way to organise a Balanced Scorecard.«*

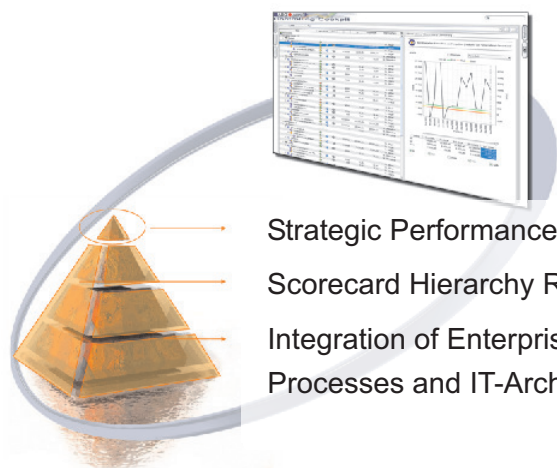


**Forrester, Enterprise Architecture Tools Niche Features**

*»Its (Ann.: ADOscore) approach is unique in that it automatically generates cockpits and allows connections to external data sources to easily calculate or update the graphical representations of KPIs associated with a defined strategy.«*



# ADOscore and Enterprise Modelling



- Strategic Performance Management with Scorecards
- Scorecard Hierarchy Right Down to an Operative Level
- Integration of Enterprise Modelling Elements such as Business Processes and IT-Architectures

## ADOscore - Strategy and Performance Management

ADOscore provides you with extensive possibilities of creating scorecards and managing performance and to apply these efficiently in a targeted and success-oriented way. Thanks to the various models in ADOscore this whole (balanced) process of creating scorecards can be clearly illustrated, which provides a basis for planning objectives and indicators as well as their evaluation. The automated calculation and creation of analyses, Controlling Cockpits and reports within the Management Portal of ADOscore, supports active control of your strategy together with providing comprehensive communication of progress within your company.

## The ADOscore Strategy Component

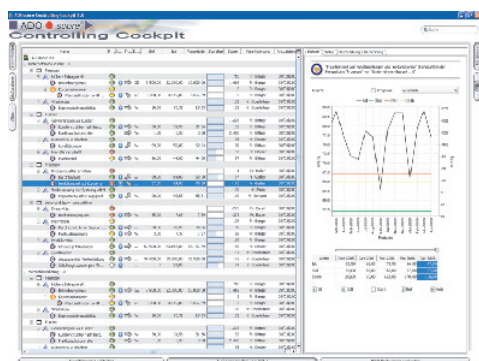
### Design of Strategy and Performance

- Strategy Modelling within your Enterprise Model
- Modelling and integrated mapping of strategies, objectives, initiatives, indicators, responsibilities, structures of data, etc.
- Communication within the company (documentations, graphics)
- Versioning



### Operationalisation of Strategy and Performance

- Data connection through ODBC, XLS, CSV interface or manual data entry
- Calculation of indicators as well as traffic light coding, score calculation
- Reuse of indicators and structures



## The ADOscore Cockpit Component

- Automated cockpit and report generation to illustrate information graphically
- Various features such as illustrating trends, filter and search functions, comparison of indicators (diagram)

Contact us at: [adoscore@boc-eu.com](mailto:adoscore@boc-eu.com)

ADOscore® is a registered trademark of BOC GmbH. All other named brands are property of their respective companies.